

FUS-2000

Urinalysis Hybrid

The FUS-2000 is a fully automated integrated urinalysis system which not only provides results from urine chemistry and urine formed elements but also provides physical images of each formed element.



- High throughput: 120T/H
- Simple and compact 2 in 1 design
- Standardized urinalysis testing solution
- Walk-away operation with continuous loading (220 samples)
- User-friendly design, simple operation and convenient maintenance

Test Principle

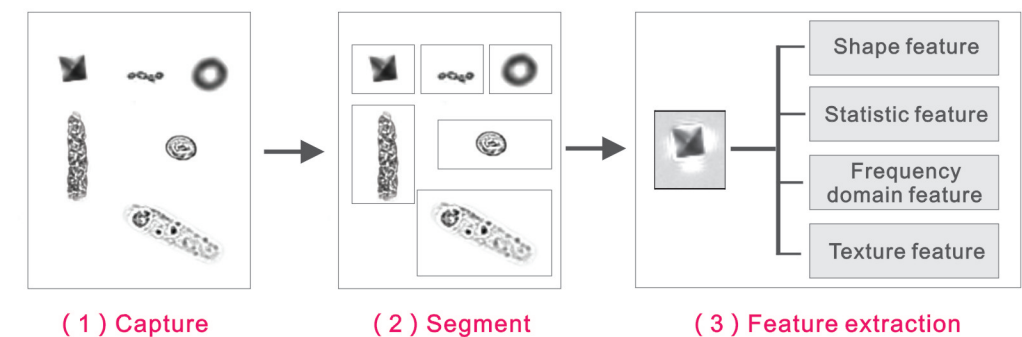


Through the combination of intelligent dry chemistry and imaging technology comparison, the FUS-2000 provides the user with precise data, effectively lowering the risk of both false positive and false negative results.

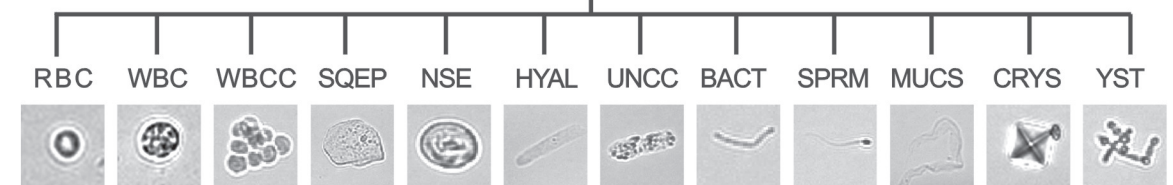
- High precision aspiration and dripping system guarantees accurate sample distribution on the urine strips.
- Patient ID is automatically recognized by the bar code reading system.
- STAT port provides emergency sample priority.
- Blank pad for the correction of influence from urine color variation.



The FUS-2000 utilizes flat flow cytometry, digital imaging technology and AII technique to not only provide the user with objective results but also with physical images.



Artificial Intelligence Identification Technique



(4) Identification and classification

FUS-2000

Urinalysis Hybrid

The FUS-2000 is a fully automated integrated urinalysis system which not only provides results from urine chemistry and urine formed elements but also provides physical images of each formed element.



- High throughput: 120T/H
- Simple and compact 2 in 1 design
- Standardized urinalysis testing solution
- Walk-away operation with continuous loading (220 samples)
- User-friendly design, simple operation and convenient maintenance

Test Principle



Through the combination of intelligent dry chemistry and imaging technology comparison, the FUS-2000 provides the user with precise data, effectively lowering the risk of both false positive and false negative results.

- High precision aspiration and dripping system guarantees accurate sample distribution on the urine strips.
- Patient ID is automatically recognized by the bar code reading system.
- STAT port provides emergency sample priority.
- Blank pad for the correction of influence from urine color variation.



The FUS-2000 utilizes flat flow cytometry, digital imaging technology and AII technique to not only provide the user with objective results but also with physical images.

